

INTERNATIONAL OFFER FACT SHEET 2024-2025

ERASMUS CODE: F NANCY 43



UNIVERSITÉ
DE LORRAINE

IAE METZ
School of
Management

CALENDAR

Fall 2024-2025 semester

- Start of classes:
2nd week of September
- End of classes:
1st week of January

Spring 2024-2025 semester

- Start of classes:
1st week of January
- End of classes:
3rd week of May

Suggested Arrival:

- 1st week of September
- 1st week of January

Exams:

- During classes period

Grade transcripts:

- Sent to coordinator

*compulsory attendance

IAE Metz School Of Management was founded in 1988 and is part of the Université de Lorraine.

It offers each year its 1,400 students, from the 3rd year of a bachelor's degree to a master's degree, training courses leading them to national diplomas in the management fields.

The school participates in the training and development of managers in companies, welcoming more than 350 professionals each year.



OUR INTERNATIONAL OFFER:

IAE Metz School of Management offers 4 main study programs to its international students: "Finance," "Innovation Management", "Supply Chain and International Purchases" and "Business Management". IAE enhances its international offer by including foreign languages in its programs.

All of these programs contain different exams, the students will be allowed to choose which ones to attend. "Innovation Management" and "Supply Chain and International Purchases" apply some constraints.

All the offered courses are taught in English.

IAE Metz School of Management does not require a specific amount of credits achieved to validate the whole period.

We recommend asking your home university for any credit requirements.





OFFERED COURSES

FINANCE

Forex - Fall, 3ECTS

International Financial Engineering - Fall, 3ECTS

Compliance and Risk Management - Fall, 3ECTS

International Audit - Fall, 3ECTS

Green Finance and Governance - Fall, 3ECTS

Impact Investing - Fall, 3ECTS

International Financial Skills - Fall, 3ECTS

Business English 1, Fall - 3ECTS

German 1/Spanish 1, Fall - 3ECTS

Students Project, Fall - 3ECTS

Strategy and Business Model - Spring, 3ECTS

Managerial Monitoring - Spring, 3ECTS

Audit Control - Spring, 3ECTS

Corporate Valuation and Diagnostic - Spring, 3ECTS

Funds Environment - Spring, 3ECTS

Financial Assets - Spring, 3ECTS

Financial Modeling - Spring, 3ECTS

Survey in the fields of Fund Audit and Risk Management - Spring, 3ECTS

Business English 2, Spring - 3ECTS

German 2/Spanish 2, Spring - 3ECTS



OFFERED COURSES

SUPPLY CHAIN AND INTERNATIONAL PURCHASES

Supply Chain Management - Fall, 3ECTS

Purchases - Fall, 3ECTS

Lean Management - Fall, 3ECTS

Purchasing and Contract Law - Fall, 3ECTS

Risk Management Applied to International Purchases - Fall, 3ECTS

Management of a Purchase Team - Fall, 3ECTS

Intercultural Management - Fall, 3ECTS

Business English 1 - Fall, 3ECTS

E-Purchases - Fall, 3ECTS

KPI and Reporting - Fall, 3ECTS

Purchases and Development of a New Product - Spring, 3ECTS

Business Game - Spring, 3ECTS

International Supply Chain- Spring, 3ECTS

Sustainable Supply Chain - Spring, 3ECTS

Purchases and Innovation - Spring, 3ECTS

E-Purchases - Spring, 3ECTS

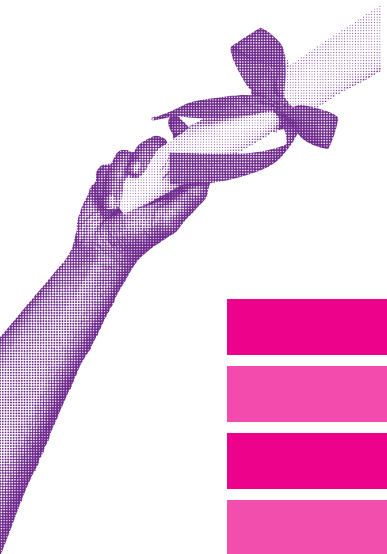
Logistics Management - Spring, 3ECTS

International Business -Spring, 3ECTS

Purchases and Supply Chain Management - Spring, 3ECTS

Business English 2 - Spring, 3ECTS





OFFERED COURSES

BUSINESS MANAGEMENT

Strategic Marketing - Fall, 3ECTS

Operational Marketing - Fall, 3ECTS

Customer Management - Fall, 3ECTS

Risk Management - Fall, 3ECTS

Governance and Management Portfolio - Fall, 3ECTS

Business English 1 - Fall 3ECTS

German 1/Spanish 1 - Fall, 3ECTS

Students Project - Fall, 3ECTS

Business Model and Strategy - Fall, 3ECTS

Business Evaluation and Diagnostic - Fall, 3ECTS

International Negotiation - Spring, 3ECTS

Legal and Cultural Management - Spring, 3ECTS

Team Management - Spring, 3ECTS

Spread of Innovation - Spring, 3ECTS

Dynamic HR (AI integration) - Spring, 3ECTS

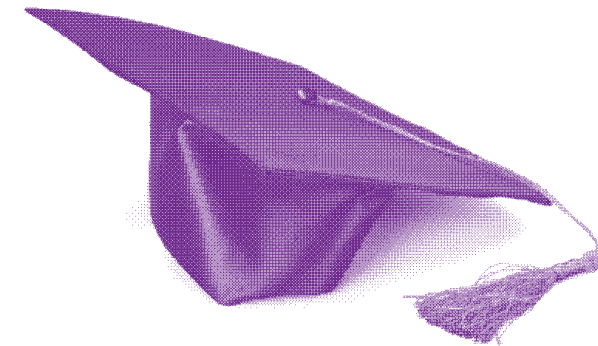
Audit Management - Spring, 3ECTS

Negotiation Skills Training - Spring, 3ECTS

Business English 2 - Spring, 3ECTS

German 2/Spanish 2 - Spring, 3ECTS

Budget Audit and Control - Spring, 3ECTS



IAE METZ



UNIVERSITÉ
DE LORRAINE

IAE METZ
School of
Management

OFFERED COURSES

INNOVATION MANAGEMENT*

Project Management Tools - Spring, 3ECTS

Lean Six Sigma - Spring, 3ECTS

Design and Conception in Innovation - Spring, 3ECTS

Knowledge Management - Spring, 3ECTS

Change Management - Spring, 3ECTS

Human Resources - Spring, 3ECTS

Business English - Spring, 3ECTS

German/Spanish - Spring, 3ECTS

Project Management Methodology - Spring, 3ECTS

Business Game
Applied to Quality and Innovation - Spring, 3ECTS

***Please be aware that:**

This program is only available during the 2nd semester. Students spending two semesters in mobility will have to choose an additional program for the first semester.

COURSES CHOICE

Students are expected to choose 1 program to follow, each program offers a total of 30ECTS per semester.

It is not possible to attend courses out of the chosen program.

Check our grading system.

LEARN FRENCH

The French course is provided by Défle Lorraine, completely free of charge, and it is held in Saulcy Campus;

The course is valid for 3 ECTS recognition.

We strongly recommend our international students to attend the course.

Further details will be provided at arrival.

ANY DOUBT?

- Head of International Office:

Prof. Smail Benzidia
smail.benzidia@univ-lorraine.fr

- International Project Officer:

Atef Azzi
atef.azzi@univ-lorraine.fr

HOW TO REACH IAE

- Once you are in Metz, take the Mettis line MB or the Bus L4, check the direction dependong on your position.
- Take off at "GRANDES ECOLES".
- Cross the street, you'll find us in the first green building.

LIVING COSTS

Accommodation ≈ 200-600 EUR per month (Depending on the chosen solution, shared flat/Crous accommodation/private flat etc.).

Food ≈ 150 EUR per month (Crous canteen offers a 10 pts meal system for 3.30 EUR; each dish is worth a specific amount of pts., use them to compose your lunch).

Transportation ≈ 25 EUR for students monthly pass (includes all LE MET' services, check LE MET' Espace Mobilité in Place de la République and get your monthly pass).

Extra expenses ≈ 150 EUR per month, depending on student life.

DO YOU LIKE SPORTS?

Université de Lorraine gives students the opportunity to practice a wide range of sports completely free of charge.

[Click to check the offered activites on the website](#)



FIND YOUR ACCOMMODATION

GET YOUR VISA (Our institution will provide assistance, when required, in securing residence permits for incoming students and staff)

INSURANCE

DISABLED STUDENTS





**IAE Metz School
of Management**

1 Rue Augustin Fresnel 57070 Metz
03 72 74 88 40



IAE METZ