



# KIEL UNIVERSITY

<b>ERASMUS-Code</b>	D KIEL 01
ECHE	28321
OID	E10208614 (PIC 999839529)
Websites	<a href="http://www.uni-kiel.de">www.uni-kiel.de</a>   <a href="http://www.international.uni-kiel.de">www.international.uni-kiel.de</a> <a href="https://www.facebook.com/ic.uni.kiel/">www.facebook.com/ic.uni.kiel/</a>
Facebook Instagram	<a href="https://www.instagram.com/ic.uni.kiel/">www.instagram.com/ic.uni.kiel/</a> <a href="https://www.instagram.com/incomings.ic.cau/">www.instagram.com/incomings.ic.cau/</a>
Website for Erasmus Incomings	<a href="https://t1p.de/erasmus-incomings_cau">https://t1p.de/erasmus-incomings_cau</a>
Video Erasmus in Kiel	<a href="https://youtu.be/8lda1BHWdDA">https://youtu.be/8lda1BHWdDA</a>
Postal Address	<b>Christian-Albrechts-Universität zu Kiel</b> (full legal name) International Center, Westring 400, 24118 Kiel, Germany

## INTERNATIONAL CENTER

<b>ERASMUS-Institutional Coordinators</b> (Mobility and Agreements)	<b>Antje VOLLAND, M.A. / Dr. Elisabeth GRUNWALD</b> Tel.: +49 431 880-3717 (3022) <a href="mailto:go-out@uv.uni-kiel.de">go-out@uv.uni-kiel.de</a> (same contact)
<b>ERASMUS-Incomings</b>	<b>Nadine MÜLLER</b> Tel.: +49 431 880-5517 <a href="mailto:erasmus-incomings@uv.uni-kiel.de">erasmus-incomings@uv.uni-kiel.de</a>

## APPLICATION INFORMATION FOR INCOMING STUDENTS

<b>Academic Calendar</b> / Lecture and Examination Period	Summer Semester 2024: <b>April 1<sup>st</sup> – September 30<sup>st</sup></b> <ul style="list-style-type: none"> <li>➤ Lecture period: <b>April 8<sup>th</sup> – July 19<sup>th</sup></b></li> </ul> Winter Semester 2024/25: <b>October 1<sup>st</sup> – March 31<sup>st</sup></b> <ul style="list-style-type: none"> <li>➤ Lecture period: <b>October 14<sup>th</sup> – Feb 14<sup>th</sup></b></li> </ul>
<b>Application Deadline</b> for ERASMUS-Students (Incomings)	Winter Semester: <b>June 15<sup>th</sup></b> Summer Semester: <b>January 15<sup>th</sup></b>
<b>How to apply</b>	<a href="https://t1p.de/erasmus-incomings_cau">https://t1p.de/erasmus-incomings_cau</a>
Language Requirements	At least B1 German OR English. Medicine / German Philology: B2 German German Philology: at least B2
Course Schedule	<a href="http://univis.uni-kiel.de/form">http://univis.uni-kiel.de/form</a> <a href="http://univis.uni-kiel.de/go/lec?chapter=/.*erasmus.*">http://univis.uni-kiel.de/go/lec?chapter=/.*erasmus.*</a>
<b>Special Courses for Incomings</b>	<a href="http://www.international.uni-kiel.de/en/study-in-kiel?set_language=en">www.international.uni-kiel.de/en/study-in-kiel?set_language=en</a>
<b>International Study Programs</b>	<a href="https://www.international.uni-kiel.de/en/course-catalogue/study-programmes">https://www.international.uni-kiel.de/en/course-catalogue/study-programmes</a>

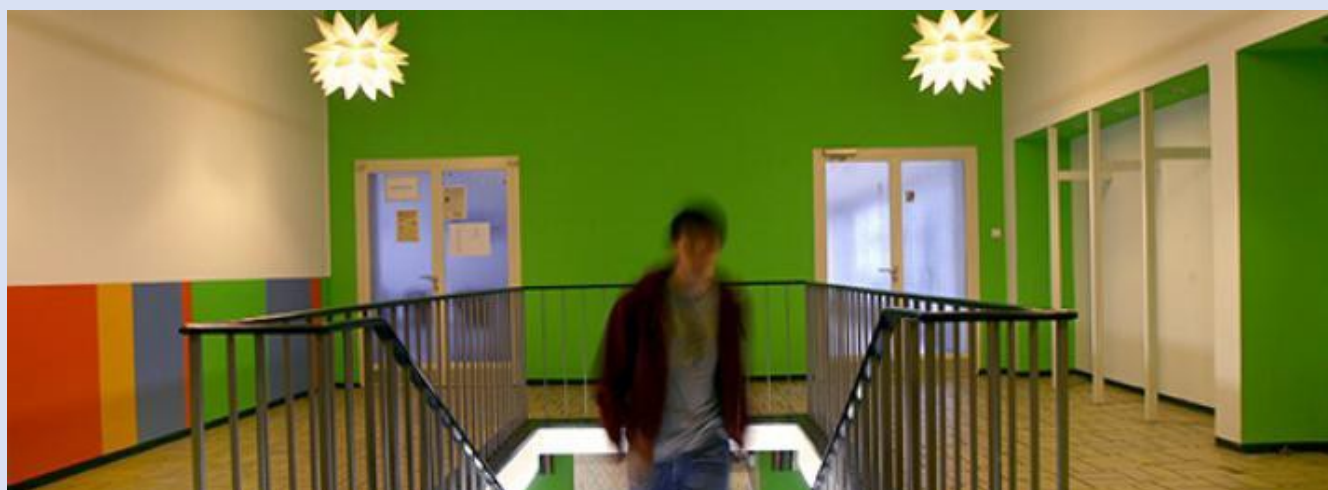


**FURTHER INFORMATION FOR ACCEPTED STUDENTS**

<b>Enrolment for ERASMUS Students</b> (Einschreibung)	Winter Semester: August 1 <sup>st</sup> – September 30 <sup>th</sup> Summer Semester: February 15 <sup>th</sup> – March 15 <sup>th</sup>
<b>Orientation days for exchange students</b> (Orientierungstage)	Winter Semester: beginning of October Summer Semester: last week in March
<b>Tutors</b>	<a href="http://www.international.uni-kiel.de/de/betreuung-und-service/beratung/tutoren">www.international.uni-kiel.de/de/betreuung-und-service/beratung/tutoren</a>
<b>Arrival Information</b>	<a href="http://www.international.uni-kiel.de/en/advising-activities-services/service-information/arrival-to-kiel">www.international.uni-kiel.de/en/advising-activities-services/service-information/arrival-to-kiel</a>
<b>Visa and Insurance</b>	<a href="http://www.international.uni-kiel.de/en/advising-activities-services/service-information/visa">www.international.uni-kiel.de/en/advising-activities-services/service-information/visa</a> <a href="http://www.international.uni-kiel.de/en/advising-activities-services/service-information/health-insurance">www.international.uni-kiel.de/en/advising-activities-services/service-information/health-insurance</a>
<b>Support for Disabled Students</b>	<b>Dagny STREICHER</b> - Tel.: +49 431 880 5885 <a href="mailto:barrierefrei-studieren@uv.uni-kiel.de">barrierefrei-studieren@uv.uni-kiel.de</a>
<b>ESN Kiel – Erasmus Student Network Kiel</b>	<a href="https://fb.me/esnkiel">fb.me/esnkiel</a> <a href="https://instagr.am/esnkiel">instagr.am/esnkiel</a>

**FACILITIES AND SERVICES**

<b>Language Center</b> (German Courses in the Semester)	<a href="https://www.zfs-daf.uni-kiel.de/en?set_language=en">https://www.zfs-daf.uni-kiel.de/en?set_language=en</a>
<b>German Prep Courses</b> for basic, intermediate and advanced level in September	<a href="http://www.international.uni-kiel.de/en/summer-courses-in-kiel/preparation-course">www.international.uni-kiel.de/en/summer-courses-in-kiel/preparation-course</a>
<b>Summer School German Language and Culture</b>	<a href="http://www.international.uni-kiel.de/en/summer-courses-in-kiel/international-summer-course">www.international.uni-kiel.de/en/summer-courses-in-kiel/international-summer-course</a>
<b>Social Services for International Students</b> (offered by Studentenwerk SH: help for Integration, how to meet people in Kiel, financing, working in Germany ...)	<b>Ulrich JUNG</b> <a href="mailto:jung@studentenwerk.sh">jung@studentenwerk.sh</a> Tel.: +49 431 8816 154 <a href="https://studentenwerk.sh/en/international-students">https://studentenwerk.sh/en/international-students</a>
<b>Study Buddy Programme</b> (offered by Studentenwerk SH)	<a href="https://studentenwerk.sh/en/study-buddy-become">https://studentenwerk.sh/en/study-buddy-become</a>



### ACCOMODATION

The International Center reserves a limited amount of dorms for International Students – application form can be found on our website (see the link)

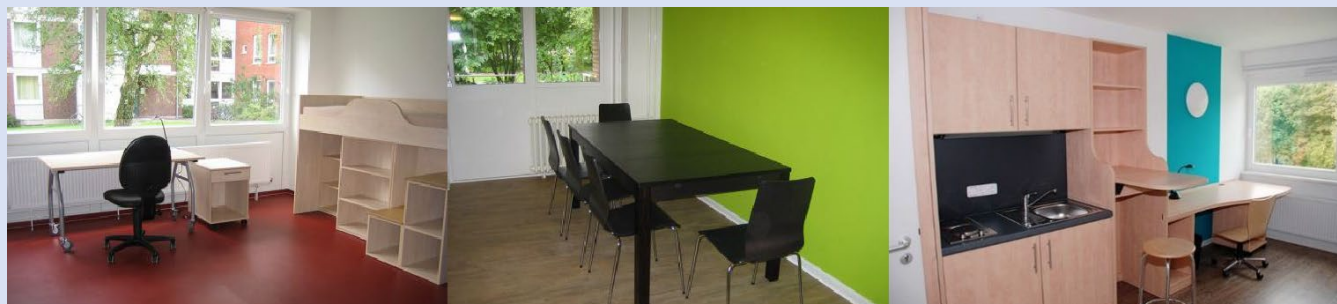
Students with disabilities may please consult our International Office. There are a limited number of barrier-free rooms in dormitories available at Kiel University.

[www.international.uni-kiel.de/en/advising-activities-services/service-information/accomodation-in-kiel](http://www.international.uni-kiel.de/en/advising-activities-services/service-information/accomodation-in-kiel)

More places are available through direct application with the Studentenwerk SH

<https://ipack.studentenwerk.sh/#admission>

**Our dormitory rooms cost between 190 and 230 Euro per month.**



### PRACTICAL INFORMATION

**Video** from the International Center of Kiel University

<https://www.youtube.com/watch?v=YAgeaTBVvFE>

**Videos** Kiel City

[www.youtube.com/user/LandeshauptstadtKiel](http://www.youtube.com/user/LandeshauptstadtKiel)

**Imagefilm** Kiel.Sailing City

<https://www.youtube.com/watch?v=IjR3CKplSEk>

**Information** about Kiel

<https://www.kiel-sailing-city.de/en.html>  
[www.kieler-woche.de/english/index.php](http://www.kieler-woche.de/english/index.php)

**Monthly Costs of Living in Euro**

Health Insurance:	<b>80 €</b>
Rent including additional costs	<b>280 €</b>
Food, Clothes, etc.	<b>323 €</b>
Study Costs (Books, etc.):	<b>170 €</b>
<b>TOTAL:</b>	<b>853 €</b>

**Cost of Living Comparisons**

[www.expatistan.com/cost-of-living](http://www.expatistan.com/cost-of-living)



### ACTIVITIES, SERVICES AND LEISURE TIME

Orientation Programme	Offered by the International Center at the beginning of each semester with information about important aspects of studying at Kiel University: <a href="https://www.international.uni-kiel.de/en/advising-activities-services/activities-events/orientation-program">https://www.international.uni-kiel.de/en/advising-activities-services/activities-events/orientation-program</a>
Sailing Programme	During the sailing season from May until September the International Center provides the opportunity to enjoy the Bay of Kiel and the Baltic Sea on its Yacht. No sailing skills are necessary, as the Yacht is manned by an experienced crew. <a href="https://www.international.uni-kiel.de/en/advising-activities-services/activities-events/sailing-programme?set_language=en">https://www.international.uni-kiel.de/en/advising-activities-services/activities-events/sailing-programme?set_language=en</a>
Study Buddy Programme	Study Buddy is a mentoring programme for international and German students, with the intention to encourage the contact and exchange with each other. The Study Buddies meet in their free time and do what is fun for them. <a href="https://studentenwerk.sh/en/study-buddy-become">https://studentenwerk.sh/en/study-buddy-become</a>

### KIEL IN SUMMER ...

Kiel Week (June)	Kieler Woche is the largest summer festival in Northern Europe with more than 3 Million visitors. <a href="http://www.kieler-woche.de/en/">www.kieler-woche.de/en/</a>
Schleswig-Holstein Musik Festival (July and August)	The Schleswig-Holstein Musik Festival is one of the largest classical music festivals in the world. <a href="http://www.shmf.de/en/home">www.shmf.de/en/home</a>
Wacken (August)	The biggest Heavy Metal Festival in the world. <a href="http://www.wacken.com/en/">www.wacken.com/en/</a>
Dragon Boat Fun Cup (September)	<a href="http://www.kielerdrachenboottage.de/">www.kielerdrachenboottage.de/</a>
Open Air Culture	Open air musical and opera, White Night, Literature Festival in the old Botanical garden, music festival on a little beach tour with historic ferries ...
Music, Music, Music ...	Bootshafensommer Brückenfestival Fördefestival

# 10 reasons for Kiel University

**Studying at the sea**

**Variety of courses in languages other than German**

**Free of charge German course (with ECTS)**

**Students from all over the world**

**Good assistance and monitoring**

**Safety**

**Moderate prices**

**Lots of sport, music and leisure activities**

**Clean and cheap dorm rooms**

**Gateway to Northern Europe**

