

# esade

## FACT SHEET 2020 / 2021



 **ESADE Business School**  
Avda. de la Torreblanca nº59  
08172 Sant Cugat – Barcelona, Spain

 **Tel: +34 93.554.35.11**  
**Fax: +3493.204.81.05**

 **<http://www.esade.edu>**

 **[bbaprogrammemgmt@esade.edu](mailto:bbaprogrammemgmt@esade.edu)**

Esade holds the selected “Triple Crown” accreditation: EQUIS, AACSB and the ASSOCIATION OF MBA’s. Esade is a member of the CEMS Alliance (CEMS) and the Partnership in International Management (PIM).

In addition, esade is a Cervantes Institute – accredited institution.

## Do Good. Do Better.

## APPLICATION

### ADMISSION REQUIREMENTS

Students must be nominated by the partner schools.

Students should have completed at least one year of studies at the undergraduate level

### NOMINATION PROCESS

To be completed by the home university Exchange coordinators. Deadlines:

**Fall term** April 30<sup>th</sup>

**Spring term** September 30<sup>th</sup>

### APPLICATION PROCESS

Documents must be provided by the student. Deadlines:

**Fall term** June 30<sup>th</sup>

**Spring term** October 15<sup>th</sup>

### COURSE REGISTRATION

To be completed online by Exchange students

**Fall Term:**

July 9<sup>th</sup> – July 14<sup>th</sup>

**Spring Term:**

Nov 10<sup>th</sup> – Nov 15<sup>th</sup>

- ✓ Copy of Passport (or ID Card only for EU citizens)
- ✓ Proof of Health Insurance (indicating clearly the coverage for the full exchange period)
- ✓ Resume/ Curriculum Vitae
- ✓ Official Transcript from Home University

## ACADEMIC CALENDAR

### FALL TERM 2020

(August 31<sup>st</sup> to December 11<sup>th</sup>)

August 25<sup>th</sup> – August 30<sup>th</sup>

August 31<sup>st</sup> – September 4<sup>th</sup>

Online

\*Due to the extraordinary situation the Orientation Program will not include face-to-face activities

September 7<sup>th</sup>

December 11<sup>th</sup>

December 21<sup>st</sup> - January 7<sup>th</sup>

Add & Drop Period

Spanish Intensive Course (optional, online)

Orientation Program\*

Students expected to be on campus

Official End of Fall Term 2020

Christmas Break

### SPRING TERM 2021

(January 11<sup>th</sup> to May 9<sup>th</sup>)

November 24<sup>th</sup> – November 29<sup>th</sup>

TBC

January 11<sup>th</sup>

January 11<sup>th</sup> – January 15<sup>th</sup>

March 29<sup>th</sup> – April 5<sup>th</sup>

May 9<sup>th</sup>

Add & Drop Period

Orientation Program

Beginning of Spring Term

Spanish Intensive Course (optional)

Easter Break

Official End of Spring Term 2021

## LEARNING EXPECTATIONS

### COURSE OFFER AND EXAMS

The Exchange Programme course offer will be available on the esade intranet. Please refer to the syllabus of each subject, where the final assessment is clearly indicated.

### REGISTRATION TO COURSES

Courses can only be added/dropped during the official registration or **add/drop periods**. No changes will be admitted once those periods are over. Students are kindly invited to check in advance with their home universities which courses can be mapped or not.

### LANGUAGE OF INSTRUCTION

Courses are taught in **English** and in **Spanish**.

Students interested in taking courses taught in Spanish are highly recommended to have a B1 level in Spanish language, according to the Common European Framework for Reference of languages (CEFR). We reserve the right to ask the official certificates as a proof of Spanish knowledge.

## LEARNING EXPECTATIONS

### SPANISH INTENSIVE COURSES

Esade offers a Spanish intensive Language course for all Exchange students who want to learn or improve their Spanish. The Spanish Intensive Course takes place during the Orientation Program and grants 2 ECTS. Note that students must enroll during the registration process

#### GRADING

0,0 - 4,9	Failed
5,0 - 6,9	Passed
7,0 - 8,9	Distinction
9,0 - 10	Outstanding

Non numeric grades  
NP is Non-attended

#### COURSE WORKLOAD

Students from European  
universities

**Min 27 ECTS – Max 33 ECTS**

Students from Non-European  
universities

**Min 23 ECTS – Max 33 ECTS**

**1 ECTS = 25  
working hours**

*However, if the student is allowed to take a lower amount of ECTS, we would need to receive a written approval of the Home University Exchange coordinator.*

Do Good. Do Better.



## FACT SHEET 2020/2021

### ENTRY VISA AND RESIDENCE PERMIT

EU citizens only need a Passport or national ID in order to enter Spain. Non-EU citizen Will need a Student Visa. When you apply for a Student Visa (*Visado de Estudiantes*) you Will be asked for the following documents:

- Passport (valid for at least 1 years from date of application)
- 2 Passport-size photos
- Proof of financial means
- Proof of medical/accident insurance to cover length of stay
- Letter of Acceptance from esade
- Other documentation, like proof of residence in Consulate's jurisdiction, a medical certificate, or a certificate of absence of a police record may also be required

The Spanish Embassy or Consulate in your home country Will decide whether to issue a 90-day visa or a 180-day visa. For longer stays, you must apply for a 90-day visa and then apply for a **Student Residence Card** within the first 30 days of your arrival.

Please check the **Exchange Student Guide** and with the nearest Spanish Embassy or Consulate in your home country for more detailed information.

Do Good. Do Better.

## EXTRA INFORMATION

### HEALTH INSURANCE

Exchange participants must arrive with their own health insurance that covers all international incidents. More information about health insurance can be found in the ESADE Exchange Student Guide, which is available on the intranet.

### COST OF LIVING

Approximate cost of living while coursing at esade:

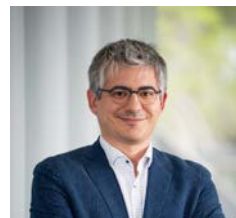
<i>Tuition Fees</i>	<i>Waived</i>
<i>Accommodation</i> <i>Off Campus</i>	<i>450-700€/month</i>
<i>Accommodation</i> <i>On Campus</i>	<i>800€/month</i>
<i>Transportation</i>	<i>40€/month</i>
<i>Meals&amp;Groceries</i>	<i>200-300€/month</i>
<i>Miscellaneous</i>	<i>150€/month</i>

Do Good. Do Better.

## EXCHANGE PROGRAMME TEAM

**Prof. Gerard Costa**

Associate Dean, BBA Programme  
gerard.costa

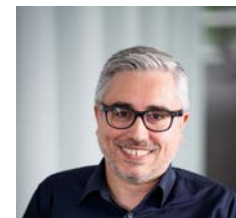
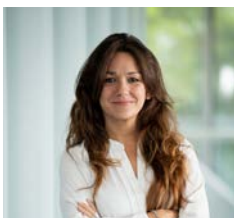


**Mr. Simone Vincis**

Director, BBA Programme  
simone.vincis@esade.edu

**Ms. Jenny Badia**

Associate Director, BBA Programme  
jenny.badia@esade.edu

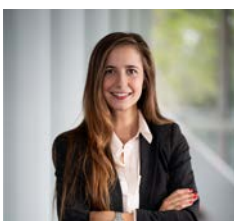


**Mr. Francesc Blanco**

Programme Manager –  
Oceania & Latin America  
francesc.blanco@esade.edu

**Ms. Sílvia Molar**

Programme Manager – USA  
silvia.molar@esade.edu

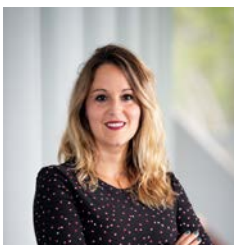


**Ms. Cristina Gómez**

Programme Manager – Europe  
cristina.gomez5@esade.edu

**Ms. Beatriz Galván**

Programme Manager – Asia  
beatriz.galvan@esade.edu

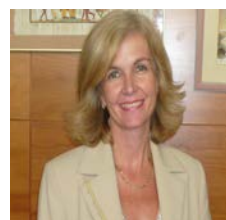
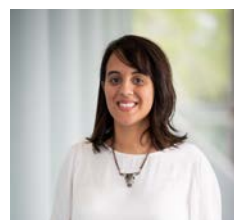


**Ms. Jimena Mesto**

Programme Manager  
jimena.mesto@esade.edu

**Ms. María Filippini**

Project Manager  
maria.filippini@esade.edu



**Ms. Antònia Maria Serra**

Director, International Academic  
Relations  
antoniam.serra@esade.edu



**Ms. Caroline Beckershaus**

International Student Advisor  
caroline.beckershaus@esade.edu

Do Good. Do Better.